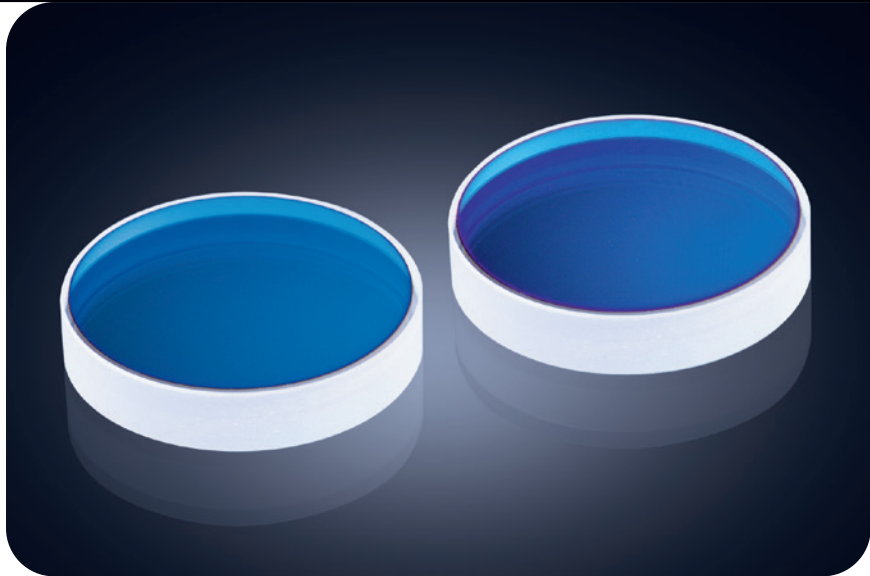


# HeNe Laser Cavity Mirror Set

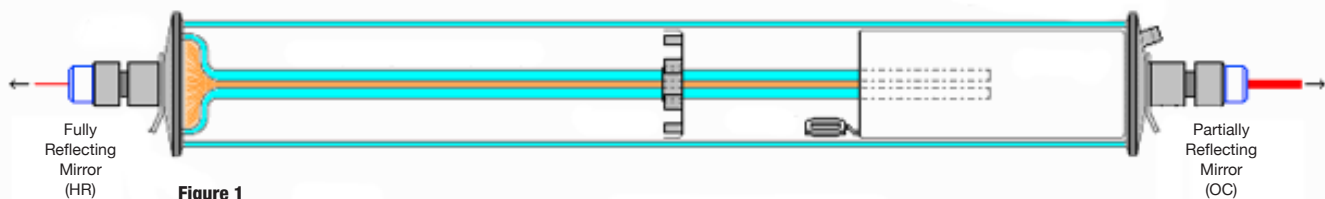
- **Laser grade substrate**
- **Designed for Brewster window tube**
- **Low loss**



The Ealing Cavity Mirrors are designed to minimize scatter and absorption, and produce very high reflectivity. These high quality mirrors result in outstanding performance and reliability as a

critical component of a HeNe laser (example shown in Figure 1 below).

The mirror set consists of a high reflector mirror with reflectance >99.99%, and an output coupler with transmittance of 1.1-1.5%.



## Specifications

**Flatness:**  $\lambda/10$

**Surface Quality:** 10-5

**Material:** BK7

**HR mirror:** Coated for 633 nm, ROC=-600 mm, R= >99.9%

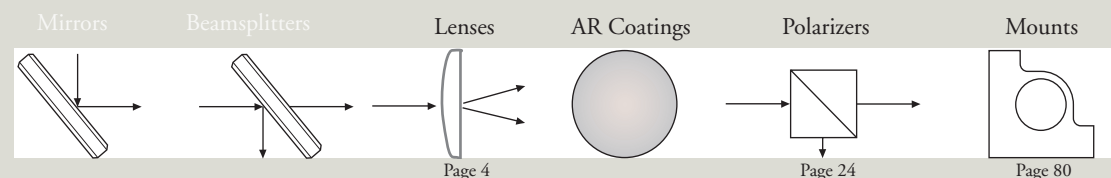
**OC:** 633 nm, ROC=-600 mm/+200 mm, T=1.1-1.5%

**Mirror Diameter:** 0.3"

## Bandpass Filters

| Catalog Number | Description       | Diameter      | Thickness    | Price US  |
|----------------|-------------------|---------------|--------------|-----------|
| 02-200-001     | Cavity Mirror Set | 7.7 mm (0.3") | 3.81-4.06 mm | \$340/set |

## Broadband Laser Optics



## Optics

Lenses

Mirrors & Beamsplitters

Prisms & Polarizers

Filters

Pinholes

## Opto-mechanics

Breadboards & Rails

Mounting Hardware

Mirror & Component Mounts

Manual Micro Positioners

Motorized Positioners